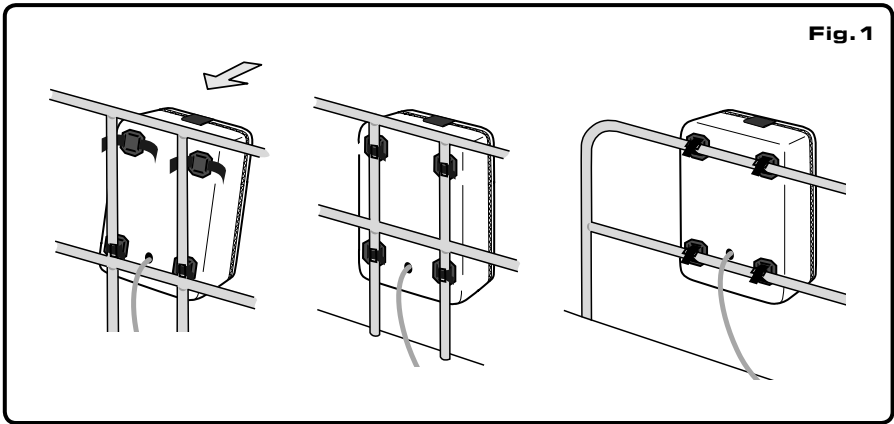
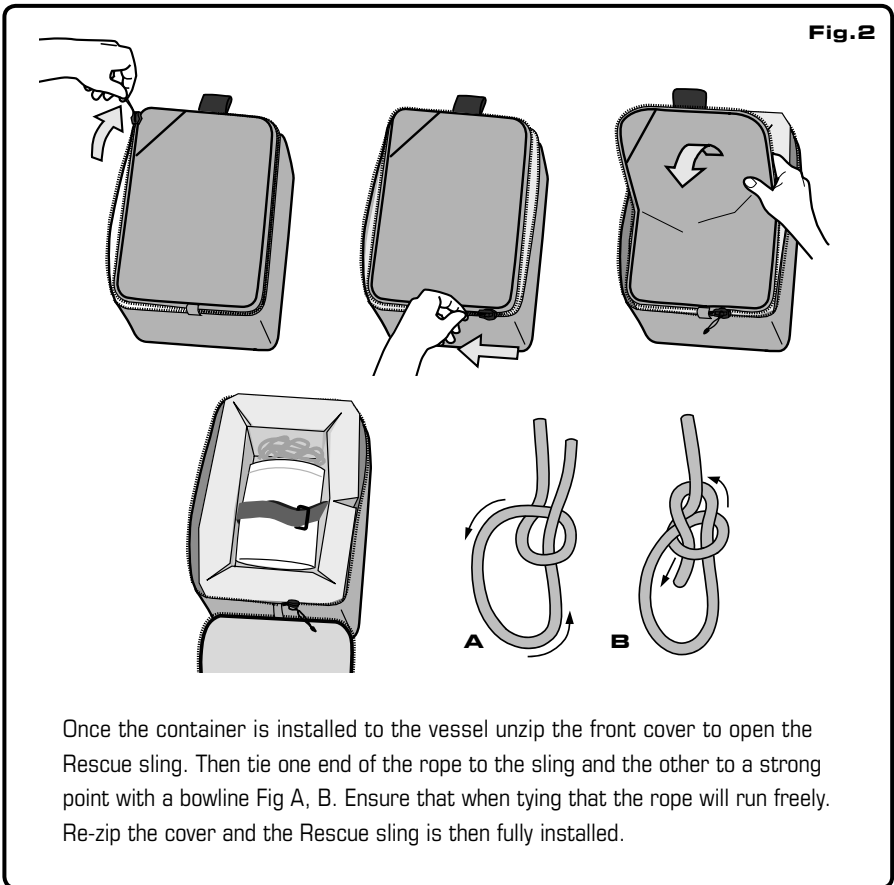


RESCUE SLING MANUAL

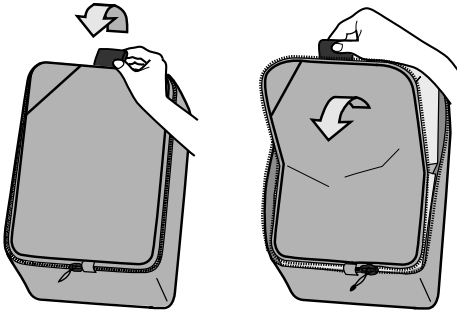
ENGLISH

BALTIC[®]
LIFEJACKETS SWEDEN

Fig. 1**Fig. 2**

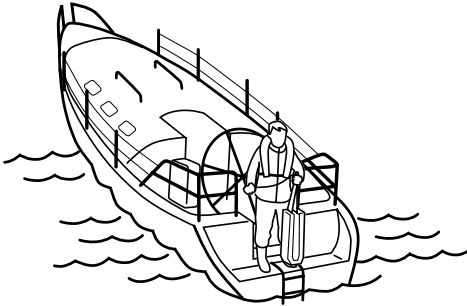
Once the container is installed to the vessel unzip the front cover to open the Rescue sling. Then tie one end of the rope to the sling and the other to a strong point with a bowline Fig A, B. Ensure that when tying that the rope will run freely. Re-zip the cover and the Rescue sling is then fully installed.

Fig.3



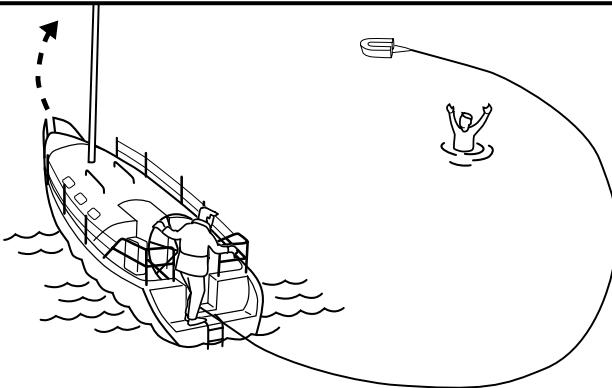
In an emergency simply pull the black tag the zip will burst and the cover will open.

Fig.4



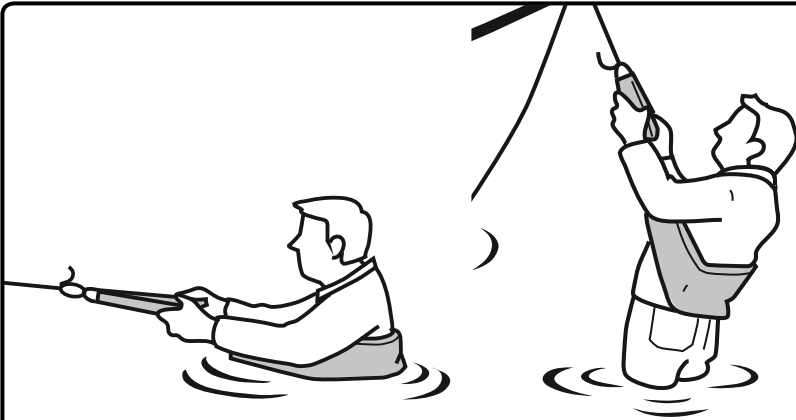
Remove the Rescue sling from the holder and deploy over the stern (ensuring it is away from the vessel).

Fig.5



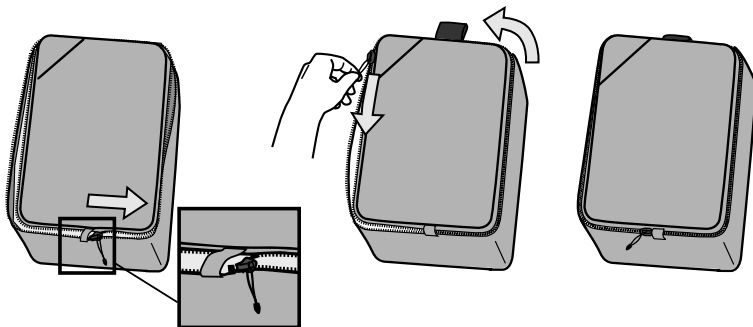
Circle the distressed until they come into contact with the Rescue sling or floating rope.

Fig.6



The distressed then puts the sling under their arms and is pulled back to the vessel and can be used to lift the distressed from the water.

Fig.7



To repack dry the Rescue sling and rope and replace in the holder. Repack the rope by flaking ensuring that it will run freely.

The zip slider is then pulled back on its self and disengaged onto one side of the zip. The slider is then run around the outside, reconnected together and then zipped up normally as per drawing.

MANUAL

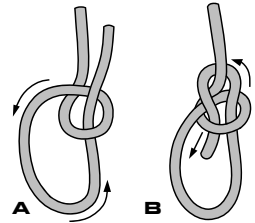
Baltic Rescue sling should be attached inboard to the pushpit using the webbing and buckles on the back of the bag. The bag can be attached to both vertical and horizontal tubes, see Figure 1.

Open the bag with the zipper, see Figure 2. Ensure that one rope end is attached to the Rescue sling, The other rope end that protrudes through the back of the bag should be attached to the push pit or strong point with a bowline, as shown in Figure A and B.

NOTE:

UV light degrades all plastics.

Each year cut off the portion of the rope that is exposed from the bag, then pull out new unexposed line and re-tie again with a bowline.



MAN OVERBOARD

- 1 Open the bag by pulling the black tape bursting the zip, see Figure 3.
- 2 Release Rescue sling over the stern, see figure 4.
- 3 Pay out the line and sail in a circle around the casualty until the Rescue sling / line comes into contact with the distressed, see Figure 5.
- 4 The distressed should then pass the Rescue sling over his head so that it fits around the chest under the arms.
- 5 Pull the distressed to the boat.
- 6 Lift or pull the distressed back on board, see figure 6.

REPACKING

All parts of the rescue sling should be dried before re-packing. The rope should be flaked back into the bag ensuring that it will run freely, then refit the Rescue sling and close the bag, see Figure 7.

NOTE:

We recommend that you familiarize yourself and practice the use of the Rescue sling.

ADVANTAGES OF THE BALTIC RESCUE SLING

- A neat compact system for the rescue of a person in distress.
- Easy installation on the boat, no tools needed.
- An efficient method in securing and rescuing a person in distress.
- Can be used in all weather conditions.

BALTIC[®]
LIFEJACKETS SWEDEN

Baltic Safety Products AB • Box 60, S-545 02 ÄLGARÅS, SWEDEN
Tel +46 506 369 90 • Fax +46 506 401 96 • info@baltic.se • www.baltic.se